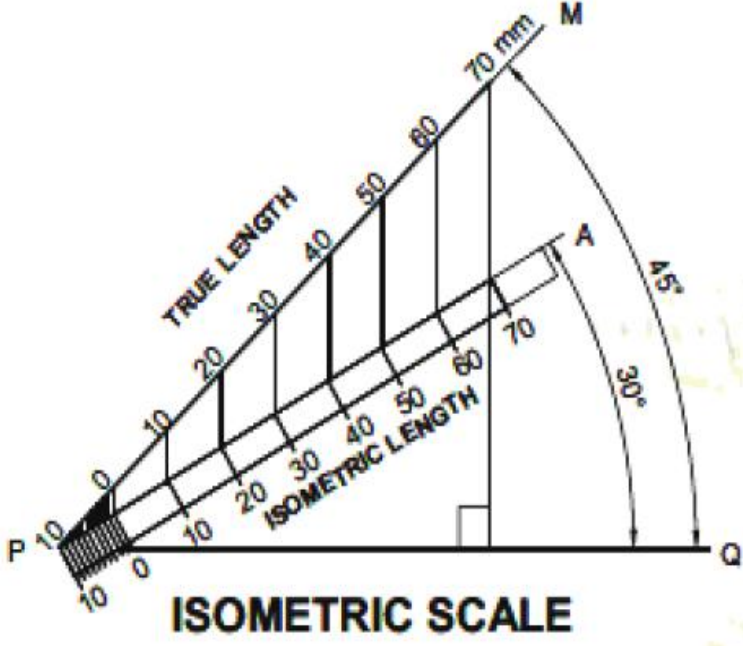
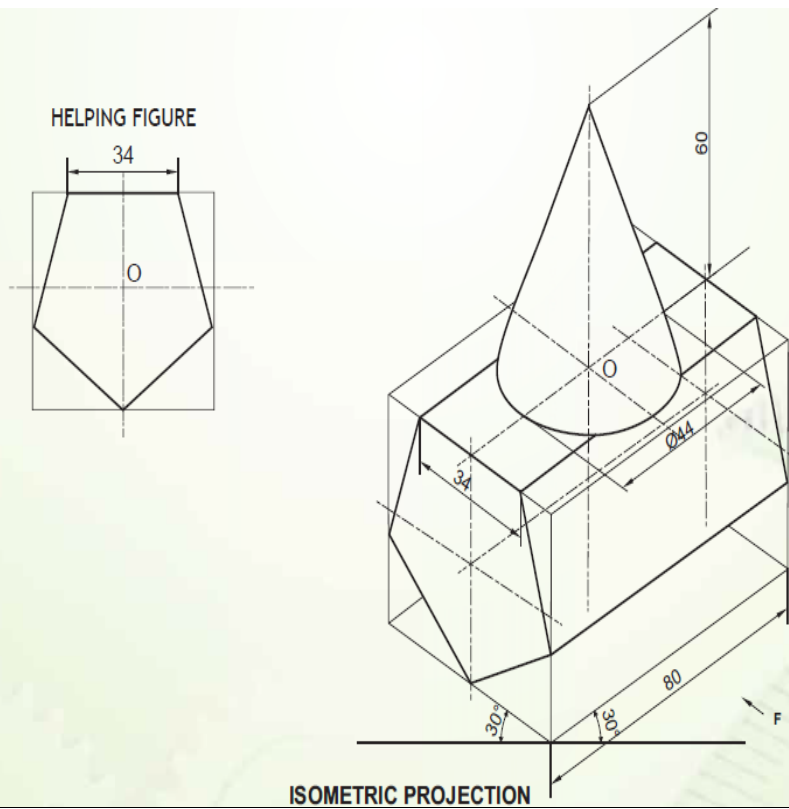
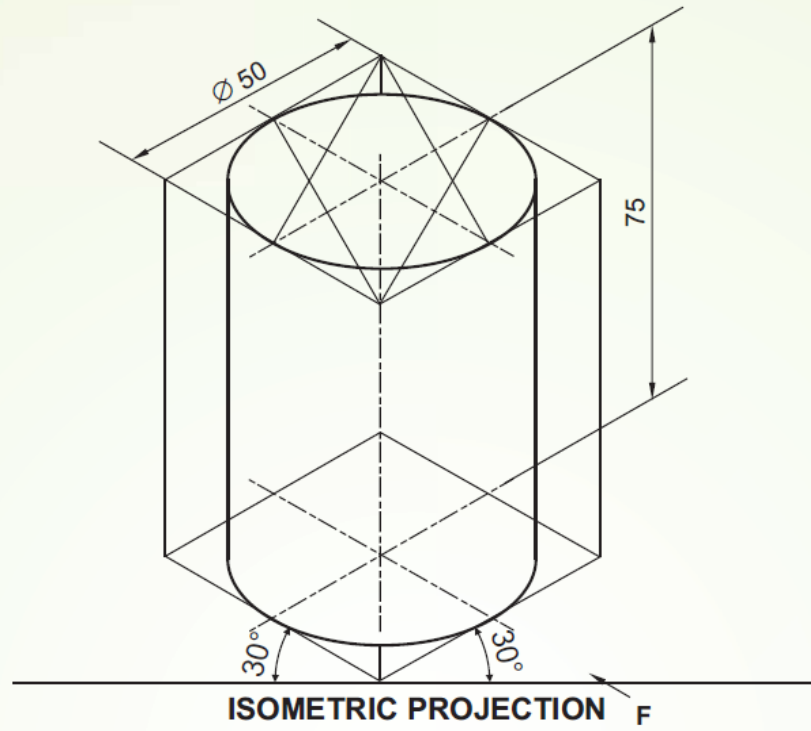
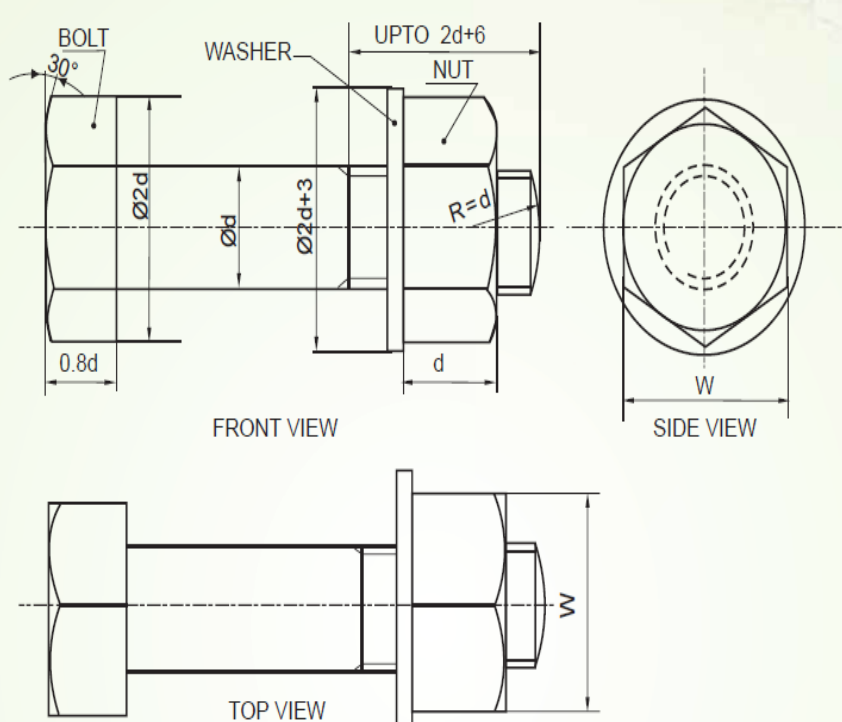
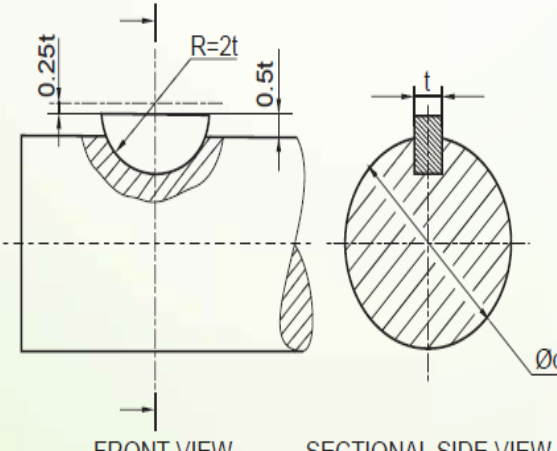
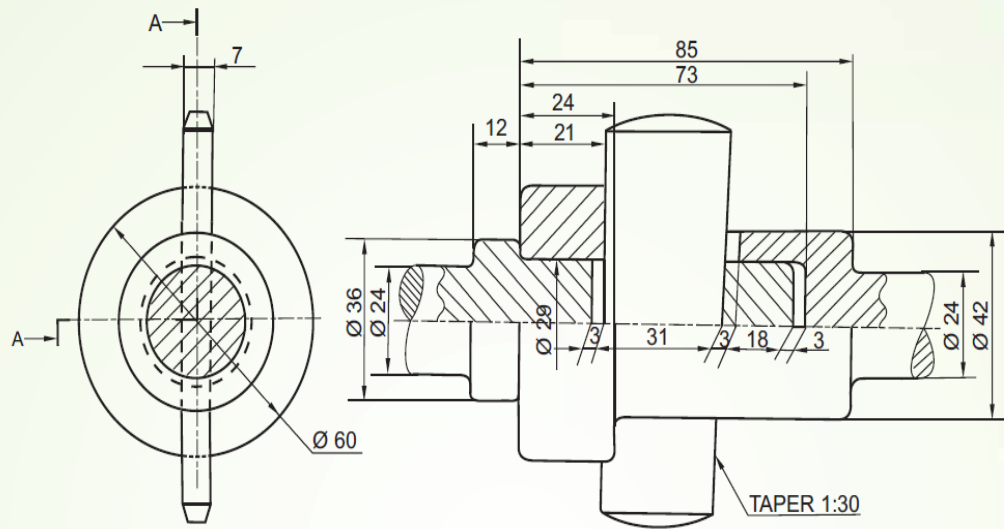


CLASS: XII	INDIAN SCHOOL MUSCAT FINAL TERM EXAMINATION	SUBJECT: EG
	SET - B	
QP.NO.	VALUE POINTS	SPLIT UP MARKS
1.	I. B II. A III. A IV. C V. B	5
2.	 <p>The diagram illustrates the construction of an isometric scale. It features a horizontal line PQ. A vertical line MQ is drawn at Q, with a right-angle symbol at M. A line PM is drawn at a 45° angle to PQ. A line PA is drawn at a 30° angle to PQ. Two parallel lines are drawn: one parallel to PM, labeled 'TRUE LENGTH' with markings from 0 to 70; the other parallel to PA, labeled 'ISOMETRIC LENGTH' with markings from 0 to 70. Vertical projection lines connect the true length scale to the isometric length scale. The text 'ISOMETRIC SCALE' is centered below the diagram.</p>	24



3.	 <p style="text-align: center;">COMBINATION OF HEXAGONAL HEADED BOLT WITH HEXAGONAL NUT &amp; WASHER</p>	8										
4.	 <table border="1" data-bbox="1051 1050 1243 1498"><tr><td>d</td><td>60</td></tr><tr><td>t</td><td>10</td></tr><tr><td>0.25t</td><td>2.5</td></tr><tr><td>0.5t</td><td>5</td></tr><tr><td>2t</td><td>20</td></tr></table> <p style="text-align: center;">WOODRUFF KEY WITH SHAFT</p>	d	60	t	10	0.25t	2.5	0.5t	5	2t	20	5
d	60											
t	10											
0.25t	2.5											
0.5t	5											
2t	20											
5.	<p><b>SOCKET AND SPIGOT COTTER JOINT (ASSEMBLY)</b></p> <p><b>(i) FRONT VIEW, UPPER HALF IN SECTION</b></p> <p>(a) Drawing the upper half portion of socket and spigot arrangement, clearance on both sides of cotter and 4mm clearance between inner walls</p> <p>(b) Drawing the lower half portion of socket and spigot arrangement</p> <p>(c) Drawing the cotter</p> <p>(d) Drawing the hatching lines</p> <p><b>(ii) LEFT SIDE VIEW</b></p> <p>(a) Drawing 5 circles</p> <p>(b) Drawing the hatching lines</p>	28										

- (c) Drawing cotter  
(d) cutting Plane



RIGHT SIDE VIEW

FRONT VIEW UPPER HALF IN SECTION

SCALE 1:1

